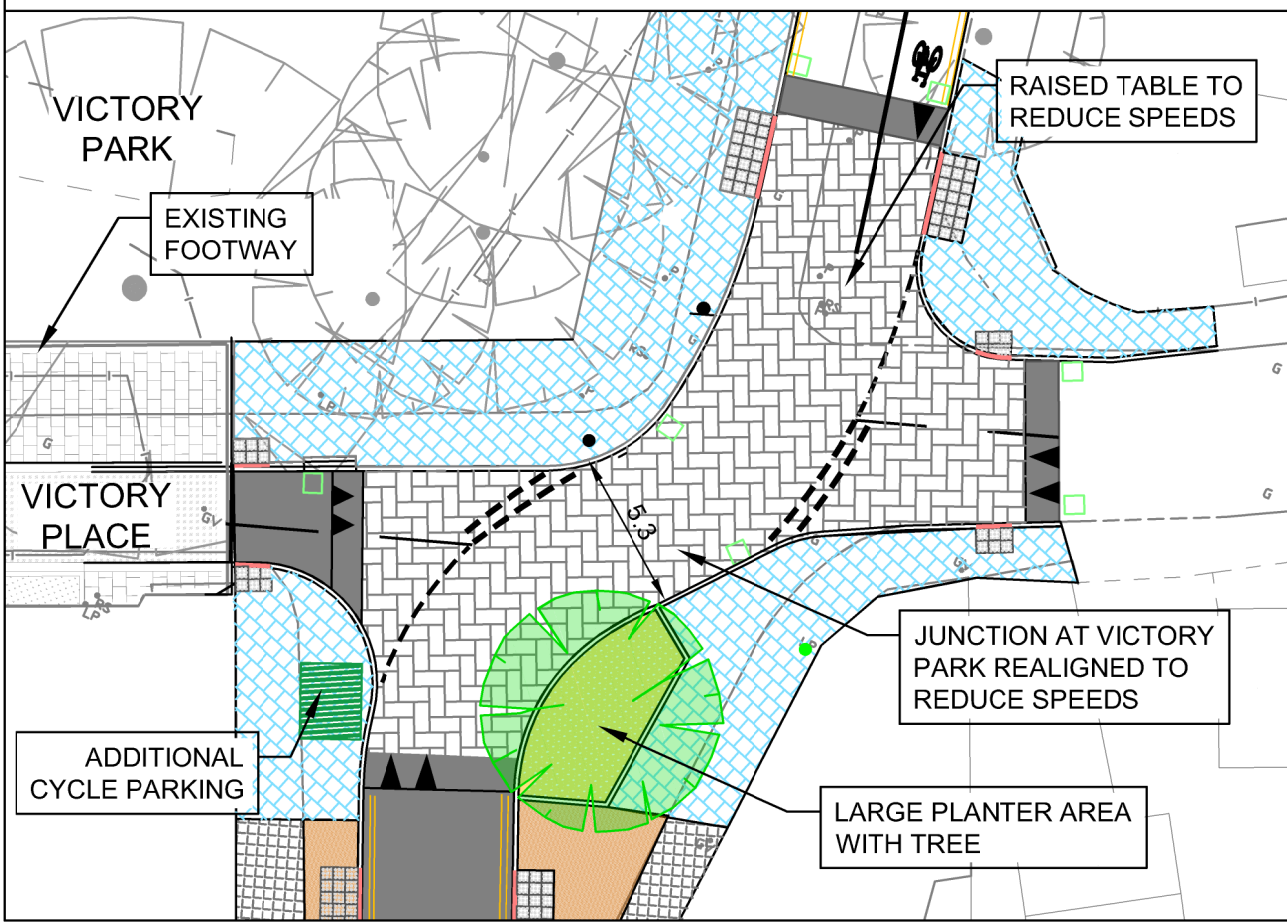
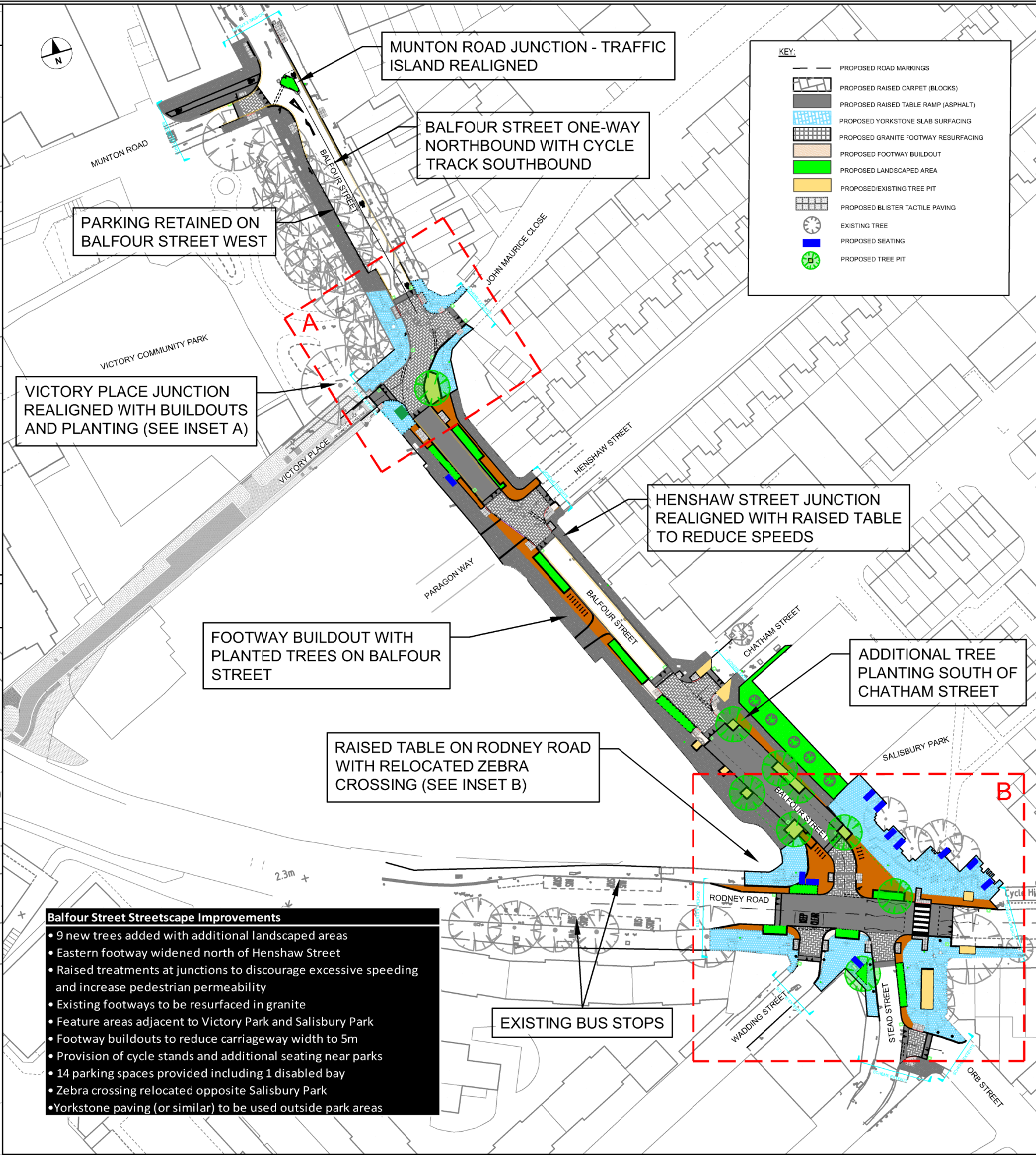
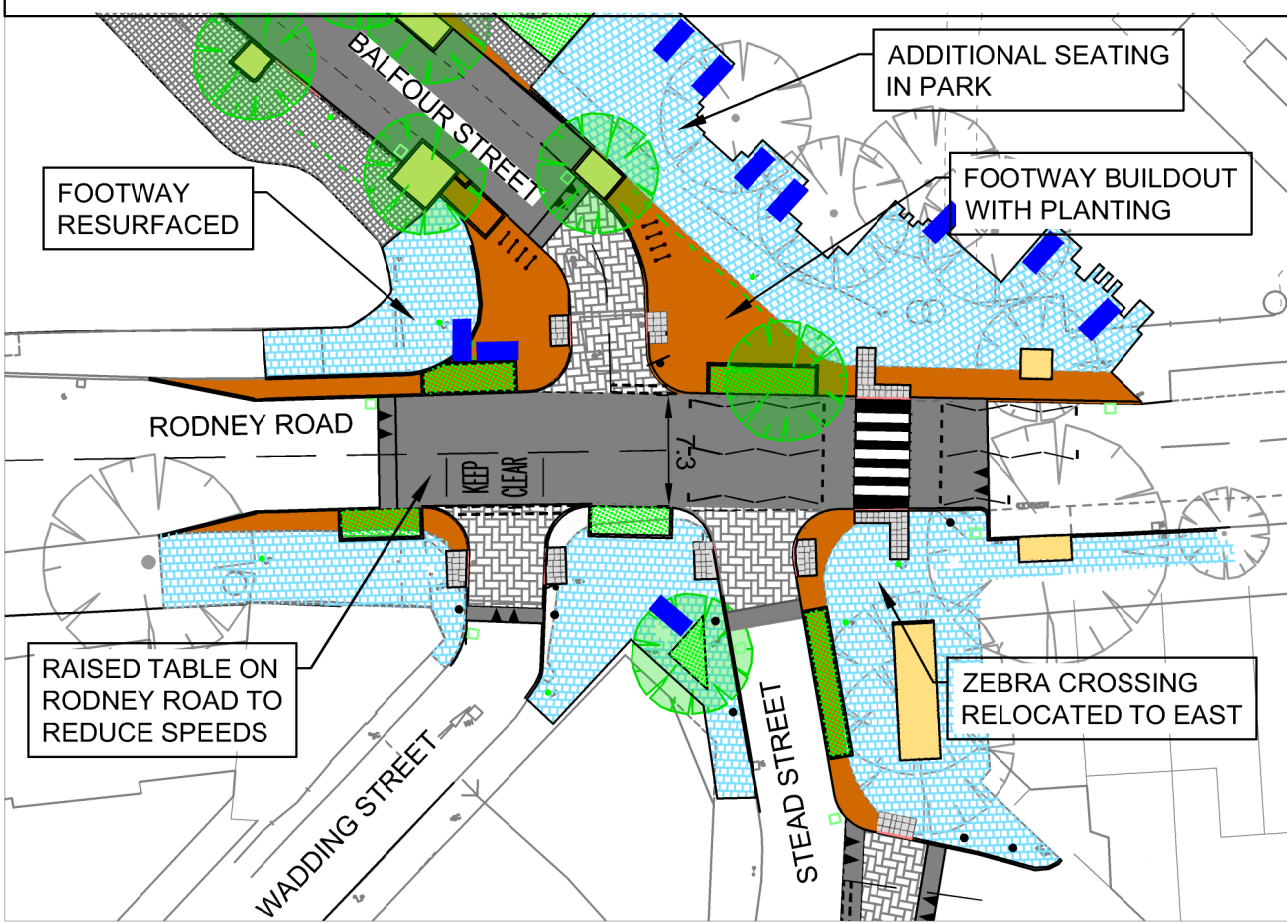


VICTORY PLACE PROPOSED - INSET A



RODNEY ROAD PROPOSED - INSET B



- Balfour Street Streetscape Improvements**
- 9 new trees added with additional landscaped areas
  - Eastern footway widened north of Henshaw Street
  - Raised treatments at junctions to discourage excessive speeding and increase pedestrian permeability
  - Existing footways to be resurfaced in granite
  - Feature areas adjacent to Victory Park and Salisbury Park
  - Footway buildouts to reduce carriageway width to 5m
  - Provision of cycle stands and additional seating near parks
  - 14 parking spaces provided including 1 disabled bay
  - Zebra crossing relocated opposite Salisbury Park
  - Yorkstone paving (or similar) to be used outside park areas